



BMO  **HARRIS BANK
CENTER**

300 Elm Street
Rockford, Illinois 61101
815-968-5600

www.thebmoharrisbankcenter.com

Technical Information



Directions



From the north - Take I-90 East to the Business Route 20* (E. State St.) exit. Exit to the right. Merge onto E. State and go about 7 miles through town. Once across the river, turn left at the second light, Church St. The BMO Harris Bank Center is one block down-the orange building on your left. Parking is on your right.

From the South -Take I-39 to US Route 20 (Freeport-5 Rockford Exits). Follow US Route 20 until the third exit, IL 2 (Main St.). Exit and follow Main St. north until you reach Cedar St. Turn left on Cedar St. and go 2 blocks to Court St. The parking ramp will be 1 block to the right. The BMO Harris Bank Center is just east of the parking ramp.

From the West - Follow US Route 20. (Note: Route 20 splits into W. State St. and Route 20; stay on Route 20). Exit from US Route 20 to IL2 (Main St.). Follow Main St. north until you reach Cedar St. Turn left onto Cedar St. and follow 2 blocks. Turn right on Court St. Parking will be on your right. The BMO Harris Bank Center is across the street, east of the parking ramp.

From the East - Take I-90 East to the Business Route 20* (E. State St.) exit. Exit to the right. Merge onto E. State and go about 7 miles through town. Once across the river, turn left at the second light, Church St. The BMO Harris Bank Center is one block down-the orange building on your left. Parking is on your right.

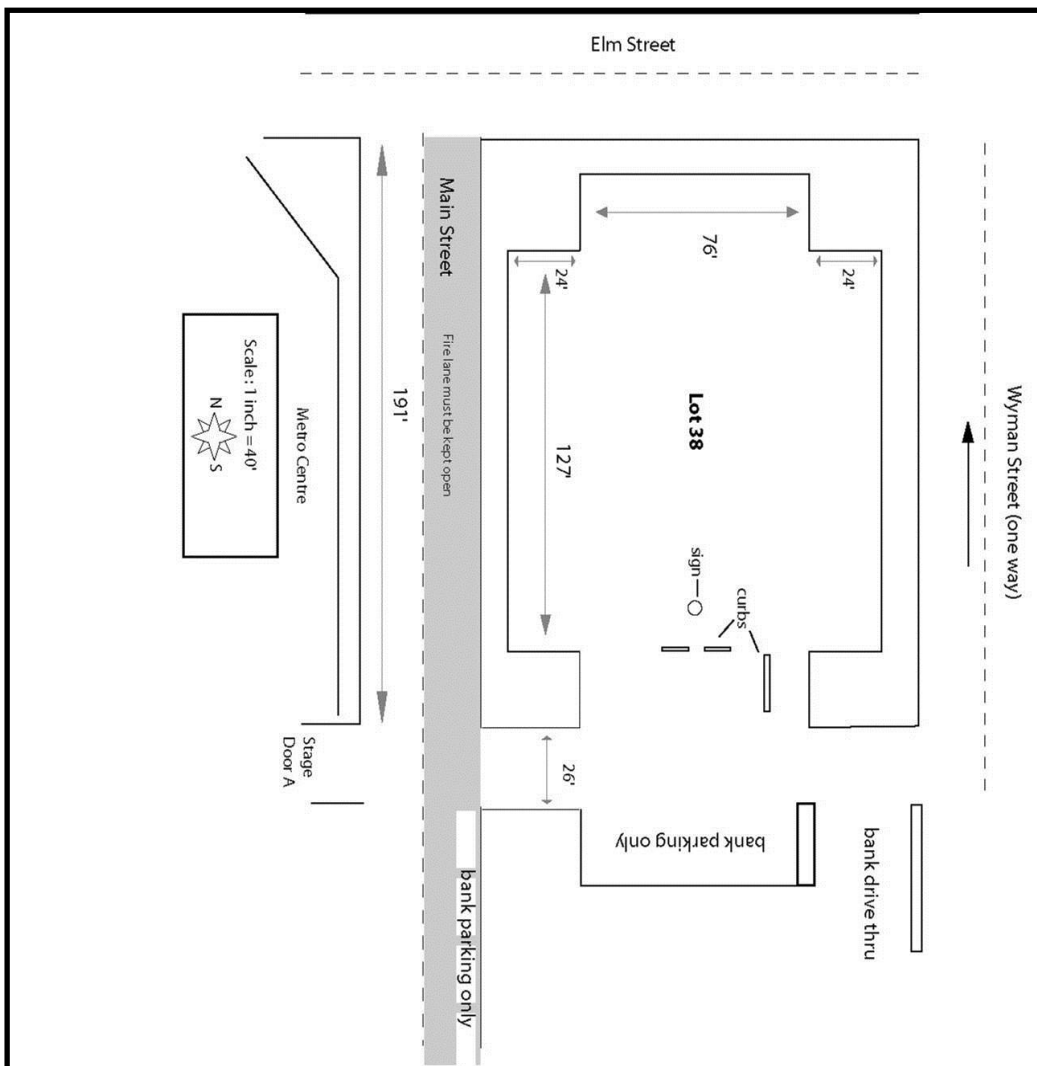
Parking & Load In

Truck & Bus Parking:

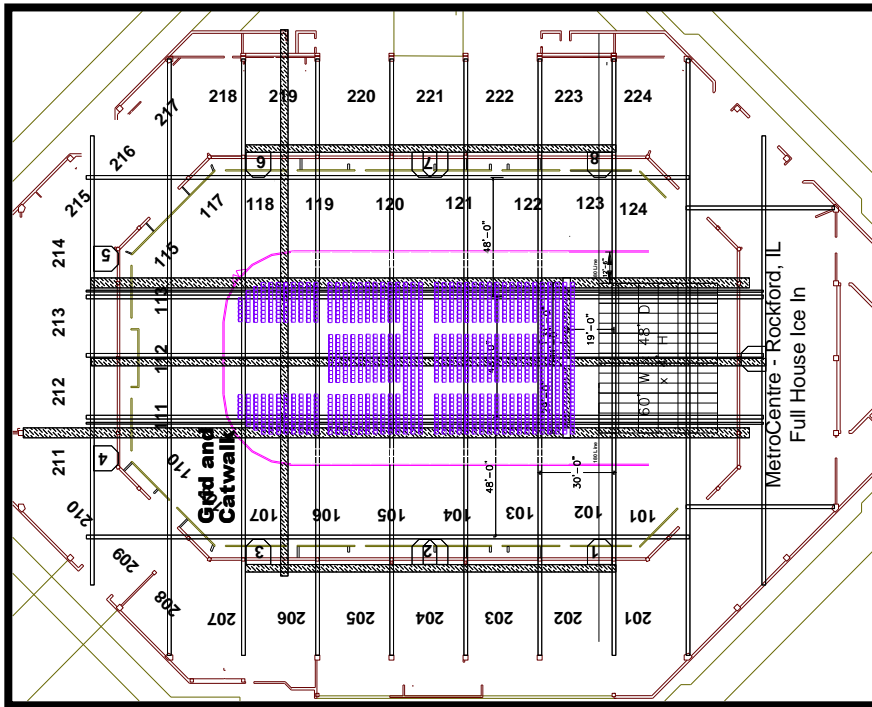
Several trucks & buses may park in Lot 38 on the east side of the building (see picture with lot dimensions below). In addition to Lot 38, Main St. can be closed for truck/bus parking from Stage Door south to Elm St. (both lanes) and the southbound (West) lane, adjacent to the venue only from Chestnut St. to stage door. Northbound portion must remain open for bank access during their hours. *Note: Within parking scenario a fire lane must remain open on Main Street for emergency vehicles.

Load In:

There are no loading docks at the venue. As many as 4 trucks at a time can load in from Main Street or trucks may back into stage door to unload one at a time. Stage Door (Main St.) elephant door is approximately 16' W x 14' H. Additional roll up door is located off stage left, allowing ramp & push off Chestnut Street to sidewalk to arena, estimated 125' push from stage. One lane of Chestnut can be used for this during load in/out with advance approval, but no vehicles may be staged or parked here for any duration of the day. Note there is a 2nd roll up door to the arena off stage left which allows street loading during the show with no interruption to actual stage.



Rigging

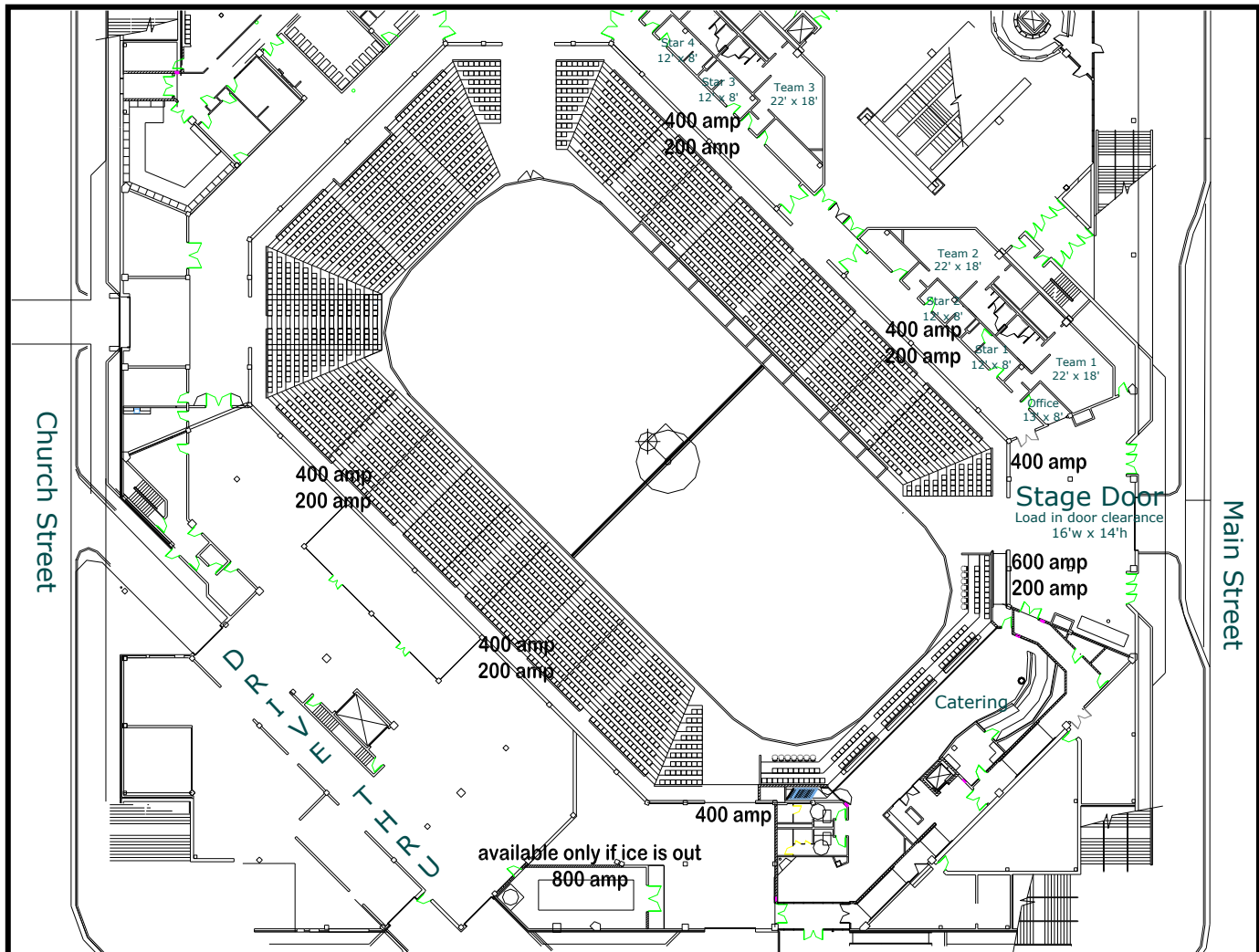


Arena has a free span open grid ceiling without acoustic panels. Rigging can be done from the grid/catwalk beams without cherry pickers, etc. The catwalks that run up/downstage handle 1 ton every 8 feet. The catwalks that run left/right handle 1 ton every 10 feet. The roof support beams run stage left/right and can handle 1 ton every 10 feet. They are 30 feet apart. All weights are for mid span, where the support beams join the catwalks, more weight can be held. Total capacity over the stage area is 100,000 pounds.

- Floor to grid - 59' 6"; Grid to High Steel 16' (Requires Boom Lift)
- Distance between beams up and down - 30'
- Weight limit - 100,000 pounds with proper bridling
- Video Board: 20'x20' - High trim to floor 44'-centered between 104/105 & 120/121
- 15 portable line sets with motors and trussing
- (8) spot baskets

Power

- Stage Left - 400A 208v 3ohms, *800A 208v 3 ohms (*800A only if ice is out)
- Stage Right - 400A 208v 3ohms, 600A 208v 3ohms & 200 A208v 3 ohms
- Catering - (24) 20A outlets
- Shore power available for busses, etc. - (3) 60A 220V
- Additional 200A 208V and 400A 208V placed around perimeter of Arena for trade show use



Sound

- Voice quality PA for trade shows/sporting events, with 24 channel inputs (not suitable for concert settings).
- Hand held and wireless mics available.
- Portable PA system with board and speakers.

House clear com 3 pin system with permanent positions in the light booth and at all follow spot positions. Temporary positions can be set up.

Lighting

Theatrical Lights:

- (6) Six Xenon 1600W Super Trooper

House Lighting:

- (112) 1000 watt metal halides with programmable irises for instant on and off.
- Dimmable incandescent fixtures supplement throughout.

Staging

Stage Right Staging:

- 3,200 sq ft (equivalent to 80' x 40') in 8' x 4' double sided decks
- Weight capacity of 4000 lbs per 4 x 8 section
- Height adjustable from 48" to 66"
- (3) Sets of steps
- Black skirting and rail

Secoa staging:

- 2,592 square feet total, with 2 sets of stairs, rail and skirting.

Other items:

- Stage Right Blow Through Barricade (4' sections - 80' total)
- Complete professional hockey setup (AHL) with goals, scoreboard, dashers, glass, net and player/penalty boxes.
- Complete professional basketball setup suitable for high school, college or professional play with 120'x60' floor and baskets.

Square Footage:

- The BMO Harris Bank Center has 45,000 square feet maximum exhibition space: 33,000 square feet on the main floor with all seating retracted and 12,000 square feet on the concourse.

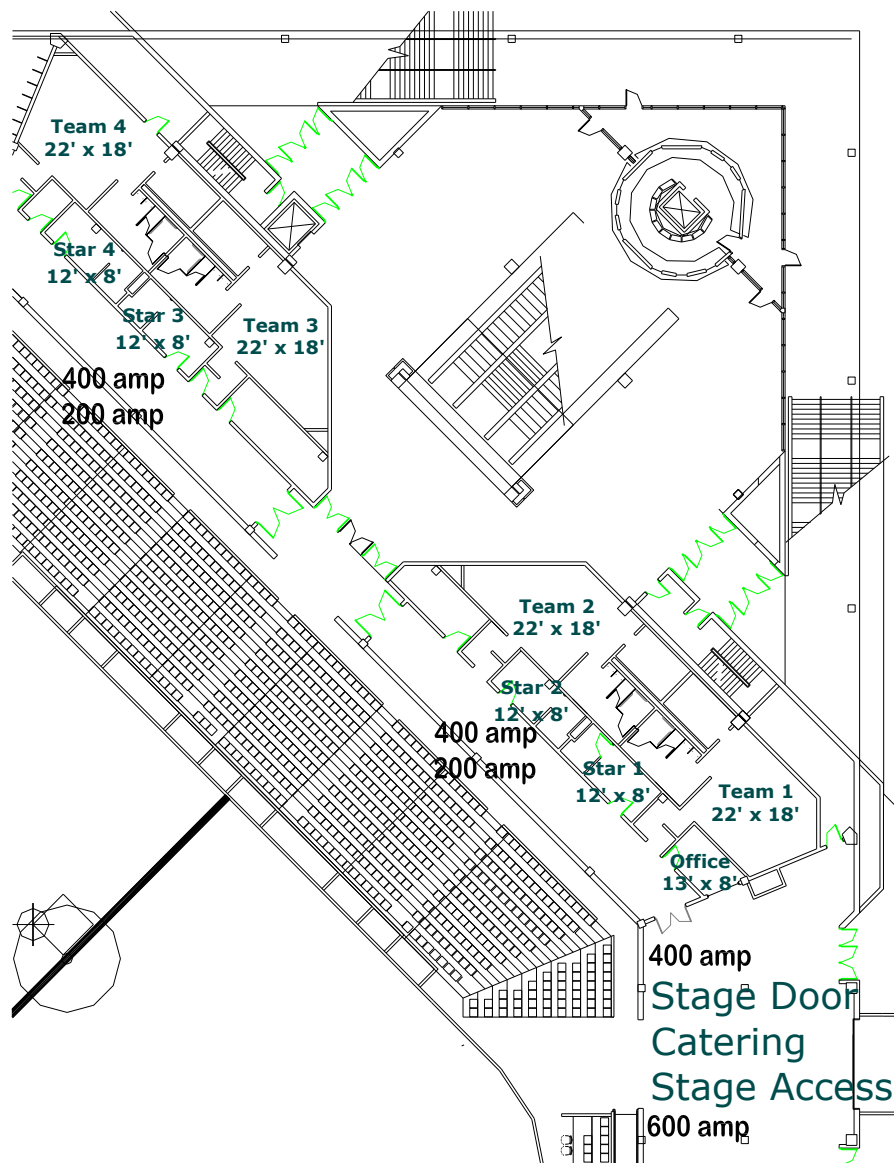
Floor & Seating Capacities

- AHL Hockey: 5,700
- Basketball: 6,200
- Rodeo: 4,900
- Truck Pull: 4,300
- Concert: 2,000-7,200 *Based on stage size and placement

Catering & Dressing Rooms

Centerplate is the on-site contracted caterer and concessionaire. For any catering, backstage and dressing room needs contact Centerplate at 815-968-4075.

See below for dressing room hallway layout.



The "VIP hall" is located off Stage Right and consists of one small production office, four (4) 22'x18' "Team" dressing rooms and four (4) 12'x8' "Star" dressing rooms. With the exception of the production office, all rooms have toilet/shower facilities. Hallway is made inaccessible to the general public by securing (staffing) the three access points. Additional costs may apply for telephone, high speed internet or cable TV connection.

Catering is behind the stage on arena floor with access via slight ramp inside arena/stage right