



BMO  **HARRIS BANK CENTER**

Technical Packet

Table of Contents

Rockford at a Glance.....	3
BMO Harris Bank Center Overview.....	4
Building Layout.....	5
Available Spaces.....	6
Load in Area.....	7
Catering, Concessions, & Merchandise.....	8
Box Office & Ticketing.....	9
Seating Layouts.....	10
Technical Specifications.....	11
Production Vendors.....	12
Rigging.....	13
Maps & Directions.....	15
Security & Safety.....	16
Local Vendors.....	17

Staff Directory

Troy Flynn

- General Manager
- tflynn@asmrockford.com
- (o) 815.972.3000 (c) 610.812.7724

Ashley Minnick

- Event Manager
- aminnick@asmrockford.com
- (o) 815.847.6378 (c) 815.608.0506

Jena Keith

- Director of Ticketing
- jkeith@asmrockford.com
- (o) 815.489.8258 (c) 815.222.0015

Kristen O’Halloran

- Booking Manager
- kohalloran@asmrockford.com
- (o) 815.489.8234 (c) 701.371.3509

Paul Lindsey

- Operations/Production Manager
- plindsey@asmrockford.com
- (c) 815.558.2228

Mike Walsh

- Director of Operations
- mwalsh@asmrockford.com
- (o) 815.489.8240 (c) 815.621.9277

Jim Lawson

- Security & Guest Services Manager
- jlawson@asmrockford.com
- (o) 815.489.8239 (c) 815.742.2002

Jacqui Frederick

- Catering Manager
- jfrederick@asmrockford.com
- (o) 815.489.8213 (c) 815.222.0106

Rockford, IL at a Glance

- 3rd largest city in Illinois
- Population: 150,250
- Downtown is located on the Rock River
- “Forest City”
- Rockford Metropolitan Statistical Area: 349,431
- Median income: \$55,667
- With a population of 1.1 million individuals within a 50-mile radius, Rockford is strategically positioned as a mid-point between Chicago, Moline, Madison, and Milwaukee. Rockford’s population is more than 150,000...smaller than Chicago, but bigger than Peoria or Springfield. Rockford is the county seat of Winnebago County, population more than 278,000. The city encompasses 56 square miles, while the county covers 519 square miles. The metro area population is more than 400,000. Manufacturing is the Rockford Region’s largest industry. Rockford companies supply the world with precision cutting tools, fasteners (nuts, bolts, screws, nails, etc.), aerospace components, machine parts and automobiles, among other things. Rockford is a regional shopping center, and the city’s hospitals and clinics make it a regional medical center as well.



Arena Overview



Building Size & Space

- 43,000 square feet maximum exhibition space
- 31,702 square feet on main floor with seating retracted
- 12,000 square feet on concourse
- Capacities ranging from 2,000 to 7,000 depending on event, stage size, stage placement, floor set-up, etc.

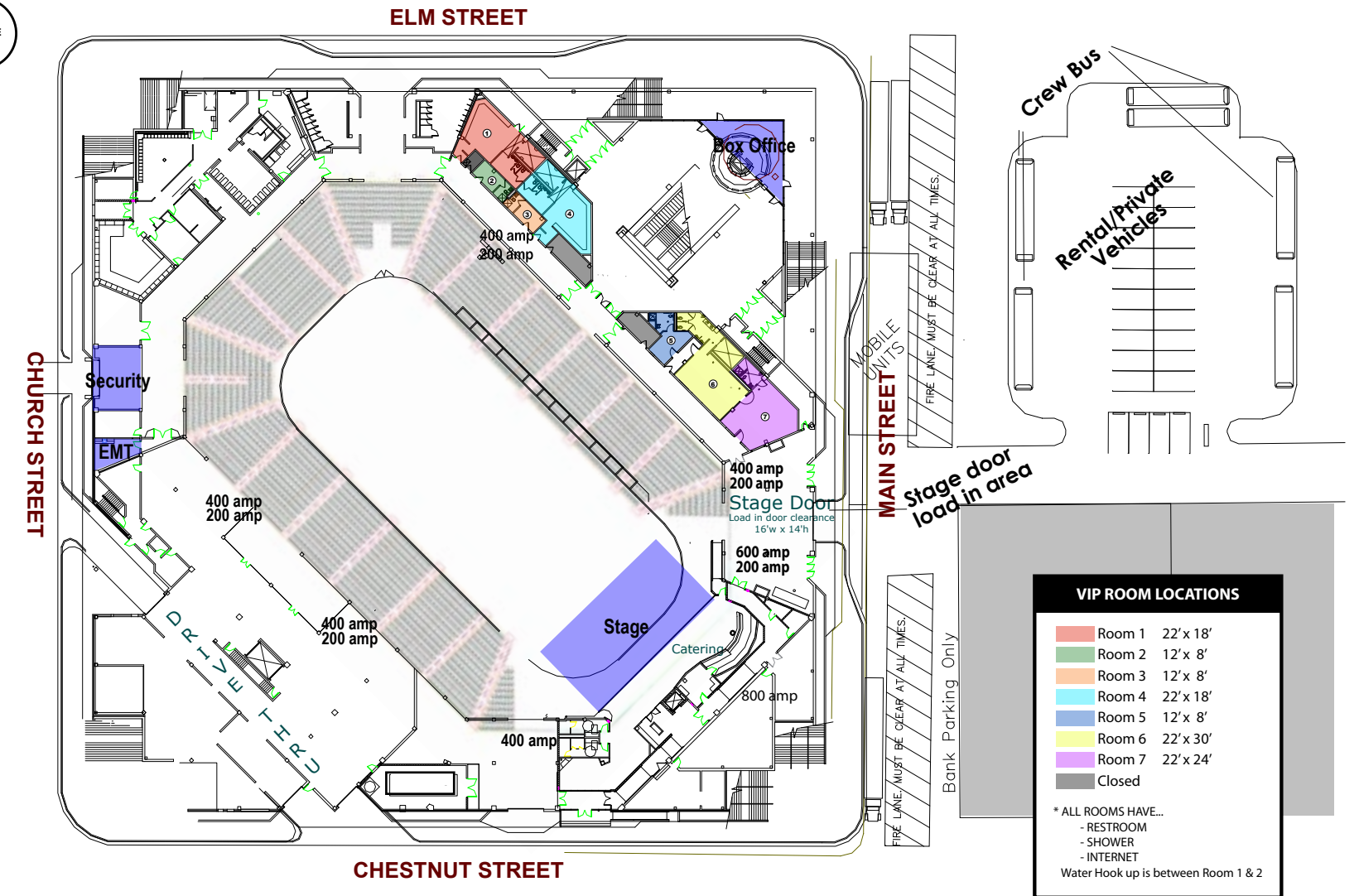
Spaces Available

- 7 dressing/locker rooms
- Club Lounge
- Hog Heaven
- Press box
- Conference room
- Meeting room
- Further descriptions on page 6

Facility Info

- Managed by ASM Global, formed from the merger of AEG Facilities and SMG in October 2019 creating a venue management powerhouse that spans five continents, 14 countries and more than 300 of the world's most prestigious arenas, stadiums, convention and exhibit centers, and performing arts venues.
- First opened in 1981
- \$23 million renovation in 2006
- Purchased American Hockey League, Chicago Blackhawks affiliate, Rockford IceHogs in 2007

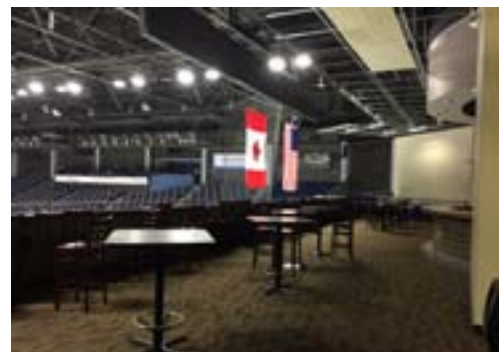
Building Layout



Spaces Available

VIP Hall

- VIP Hallway includes four locker style dressing rooms (one 22' x 24', one 22' x 30', two 22' x 18'), two star rooms (12' x 8'), & one office (12' x 8')
- All rooms in VIP Hallway have bathrooms, showers, WiFi, and ethernet
- Pipe & drape, tables & chairs with linens & skirting are available upon request, furniture can be rented upon request
- The hallway has three access points, all of which are staff during events



Mercy Health Club Lounge

- The lounge is located directly backstage
- The lounge is an open space but can be closed with an airwall to create a private room. Seating can be set for a maximum of 64 guests
- The lounge is typically used for catering, meet & greets, an extra dressing room, or production office
- The lounge has a set of bathrooms, furniture, WIFI, & ethernet

Hog Heaven

- Hog Heaven is backstage, two floors above the lounge and one floor above the concourse level
- Hog Heaven is an open space but can be set as a seated area & can accommodate a maximum of 200 guests
- It is typically used for meet & greets or VIP events

Load in Area



Stage Door

- There are no loading docks at the BMO Harris Bank Center, but as many as four trucks at a time can load in from Main Street (outside Stage Door on the East side of the building) or trucks can back into the Stage Door ramp to unload one at a time directly onto the floor
- Stage Door on Main Street is an elephant Door (16' W x 14' H) located closest to stage right. Push distance of 25'

Chestnut Door

- The Chestnut Door is a secondary load in location with a roll up door located off of stage left on Chestnut Street that allows for ramp and push off to sidewalk and then into the arena
- The push is an estimated 125' to the stage
- One lane of Chestnut Street can be used for this during load in/out with advance approval, but no vehicles may be staged or parked there for any duration of the day
- This door allows street loading during the show without interruptions

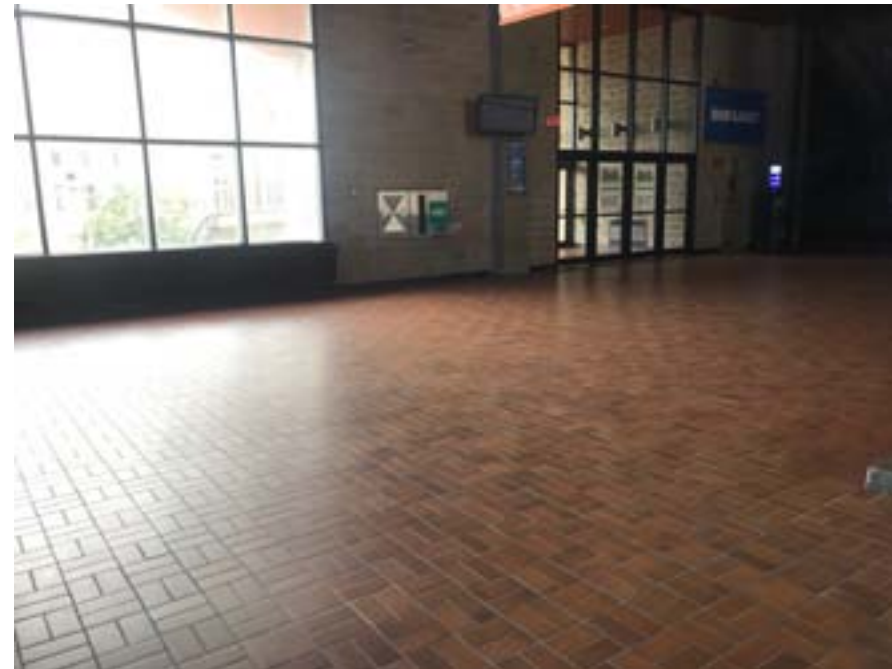
Bus/Truck Parking

- Up to 10 buses or trucks can be parked in the flat lot across from Stage Door (Lot 38) on the corner of Main Street and Elm Street
- Up to 6 buses or trucks can be parked on Main Street, leaving one lane open for through traffic

SAVOR...

Catering & Concessions

- SAVOR is our exclusive caterer and concessions manager.
- To request catering or with any food and beverage questions, please contact Jacqui Frederick at jfrederick@asmrockford.com or 815.489.8213.



Merchandise

- Merchandise is typically sold in the upper lobby on the concourse level.
- Please contact Stan Melton with any questions.
- smelton2001@gmail.com
- 815.979.5118

Box Office

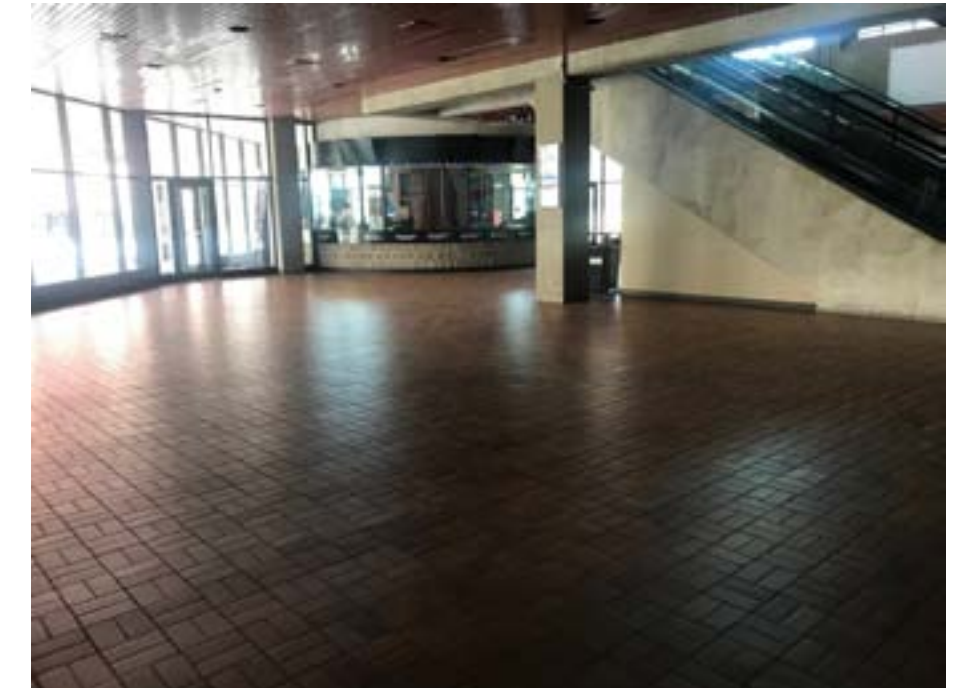
- The box office is located at 300 Elm Street, Rockford, IL 61101.
- Hours are 9am-5pm Monday-Friday, 10am-2pm Saturday, plus any event days.
- For any box office or ticketing questions, please contact Jena Keith at jkeith@asmrockford.com or 815.489.8258.

Ticketing

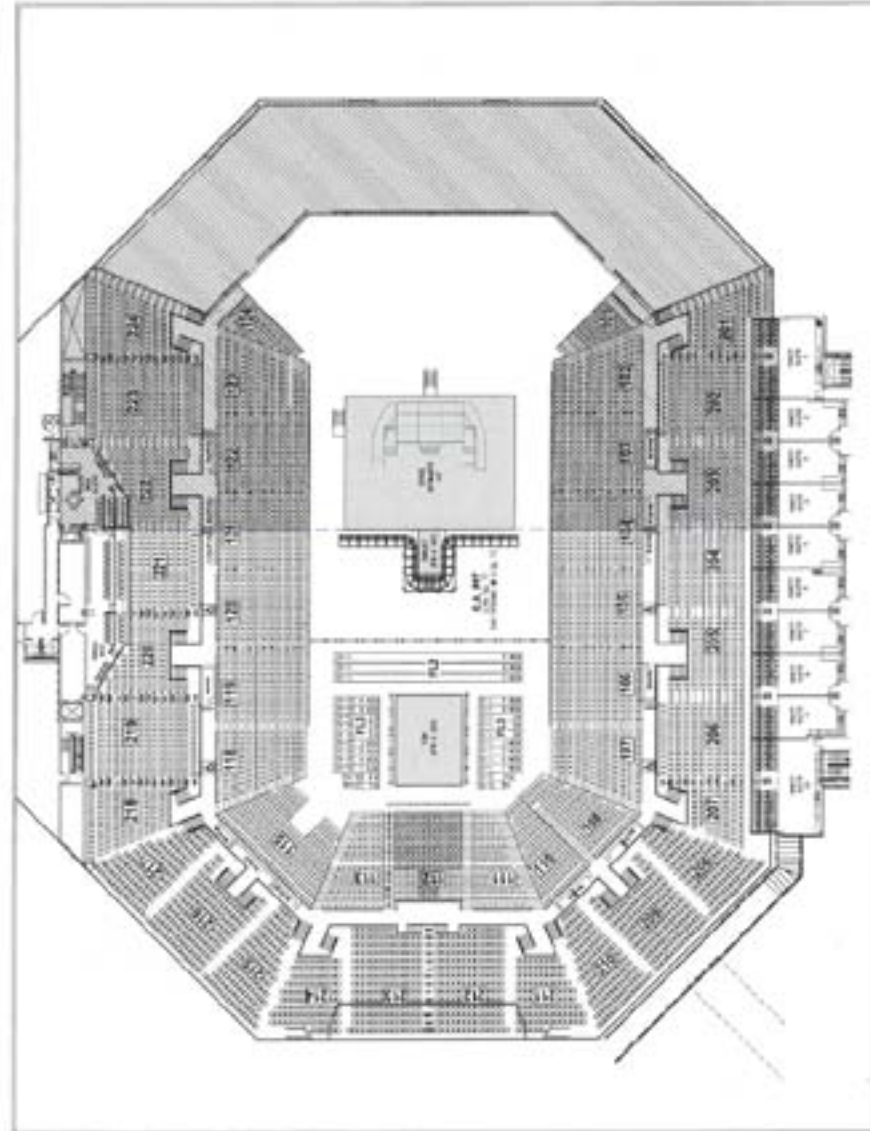
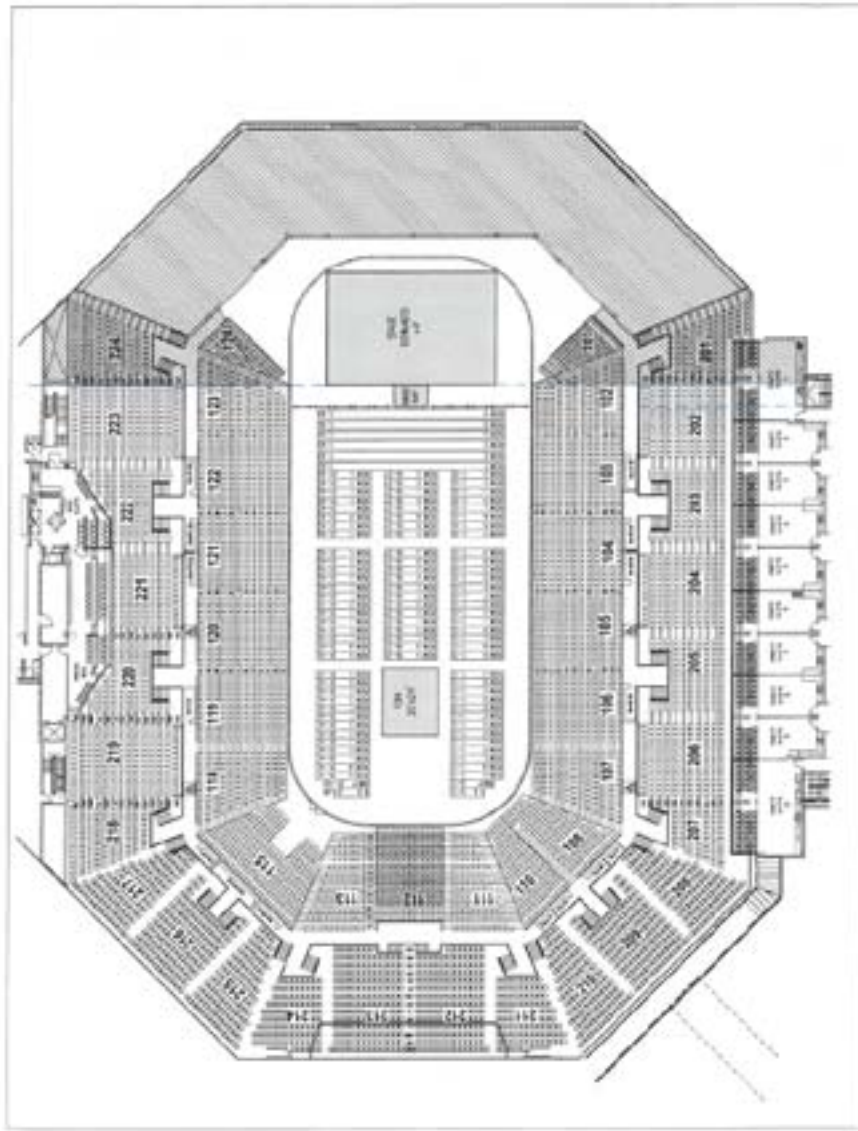
- All ticketing is run through Ticketmaster.
- www.thebmoharrisbankcenter.com
- www.ticketmaster.com
- 815.968.5222

Capacities

- Full House (seated floor): 7,000
- Full House (GA floor): 8,000
- Half House (seated floor): 4,800
- Half House (GA floor): 5,100
- For further options and questions, contact Jena Keith.



Seating Layouts



Technical Specifications

Audio

- Voice quality PA for trade shows/sporting events with 24 channel inputs (not suitable for concert settings)
- 2 handheld/wireless mics available
- Portable PA system with board & speakers
- House ClearCom 3 pin system (6 headsets) with permanent positions in the light booth & at all follow spot positions, temporary positions can be set up
- EAW speakers: 8 subs/3-way system, each component is driven off of a separate amp; 16 MID-Highs; 600 watts per component; 8 High Channels, 8 Mid Channels, 8 Low Channels; Board-12 channels, 2 Aux

Staging

- Stage Right Staging: 3,200 sq ft (equivalent to 80' x 40') in 8' x 4' double sided decks; weight capacity of 4000 lbs per 8' x 4' section; height adjustable from 48" to 72"; 3 sets of stairs; black skirting & rails available
- Secoa Staging: 2,592 sq ft (equivalent to 40' x 24'); 5' in height; 2 sets of stairs
- Stage Right blow through barricade available in 4' sections with 80' total
- Complete professional hockey setup (AHL) with goals, scoreboard, dashers, glass, net, and player/penalty boxes
- Fiberglass subfloor covering for ice in place from September-June
- NBA regulation basketball court

House Lighting

- All LED fixtures, no intelligent lighting in house
- 6 follow spot baskets, with room for 10 if rented
- 3 presets

Power

- Stage Left: 400A 208v 3ohms
- Stage Right: 400A 208v 3ohms, 600A 208v 3ohms, and 200A 208v 3ohms
- Behind Stage: 800A 208v 3ohms
- Catering: (24) 20A outlets
- Shore power available for buses, etc.: (3) 60A 220v
- Additional 200A 208v and 400A 208v placed around perimeter of arena for trade show use

Equipment

- 1 forklift with 4800lb load capacity; 4' & 8' blades with 6' extensions
- 3219 scissor lift

Video

- Videoboard display is standard definition wide screen at 720x486 pixels
- Ribbon board display is standard definition 560x40 pixels
- Pre-produced still images need to be 1920x1080 pixels; acceptable still image formats include .jpg, .pdf, & .psd
- Pre-produced videos need to be 1920x1080 HD at 30 or 60fps; acceptable video formats include .mp4 & .mov
- Only able to record to DVD, which captures the video feed from videoboard
- Music or other audio needs to be .mp3 format
- No control over audio in video booth; can output it from videos but no ability to adjust volume
- Video booth has ClearCom with wired belt packs
- 5 cameras in house: 2 press box mounted Sony cameras outputting an HD 1920x1080i signal at 60 Hz & 60 or 30 fps; 2 floor Sony cameras outputting an HD 1920x1080i signal at 60Hz & 60 or 30 fps; 1 videoboard mounted Sony remote camera outputting an HD 1920x1080i signal at 60Hz & 60 or 30 fps

Tables, Chairs, Linens

- 200' pipe & drape
- (31) 8' banquet tables, (5) 6' banquet tables, (8) 6' narrow tables, (110) 5' round tables
- 1360 chairs

Elevators and Escalators

- Four pedestrian elevators
- One freight elevator
- Two escalators

Stagehands

- IASTE Local 217
- Stagehand minimum is 4 hours; stagehands will receive a minimum for each load in, show call, & load out
- After each 5 hours of work, a meal break must be provided; this can be a 1 hour break off site or a 30-minute break on site with a meal provided by the event
- After 8 straight hours worked, stagehands receive time and a half pay
- Time and a half pay rates apply for work done between the hours of 1am to 7am
- Other union rules apply & can be discussed during the event advance

Production Vendors

Creative Audio

- Audio, Video, Lighting, Staging
- 4787 Hydraulic Road, Rockford, IL 61109
- www.creativeaudio.us
- 815.713.3425

Chicago Spotlight

- Production rental
- 1658 W. Carroll Avenue, Chicago, IL 60612
- www.chicagospotlight.com
- 312.455.1171

Upstaging, Inc

- Production services, theatrical lighting, transport trucking
- 821 Park Avenue, Sycamore, IL 60178
- www.upstaging.com
- 815.899.9888

North Park Rentals

- Staging, party needs, pipe & drape, festival equipment
- 9624 N. Second Street, Machesney Park, IL 61115
- www.northparkrental.com
- 815.633.9234

Sound Concepts

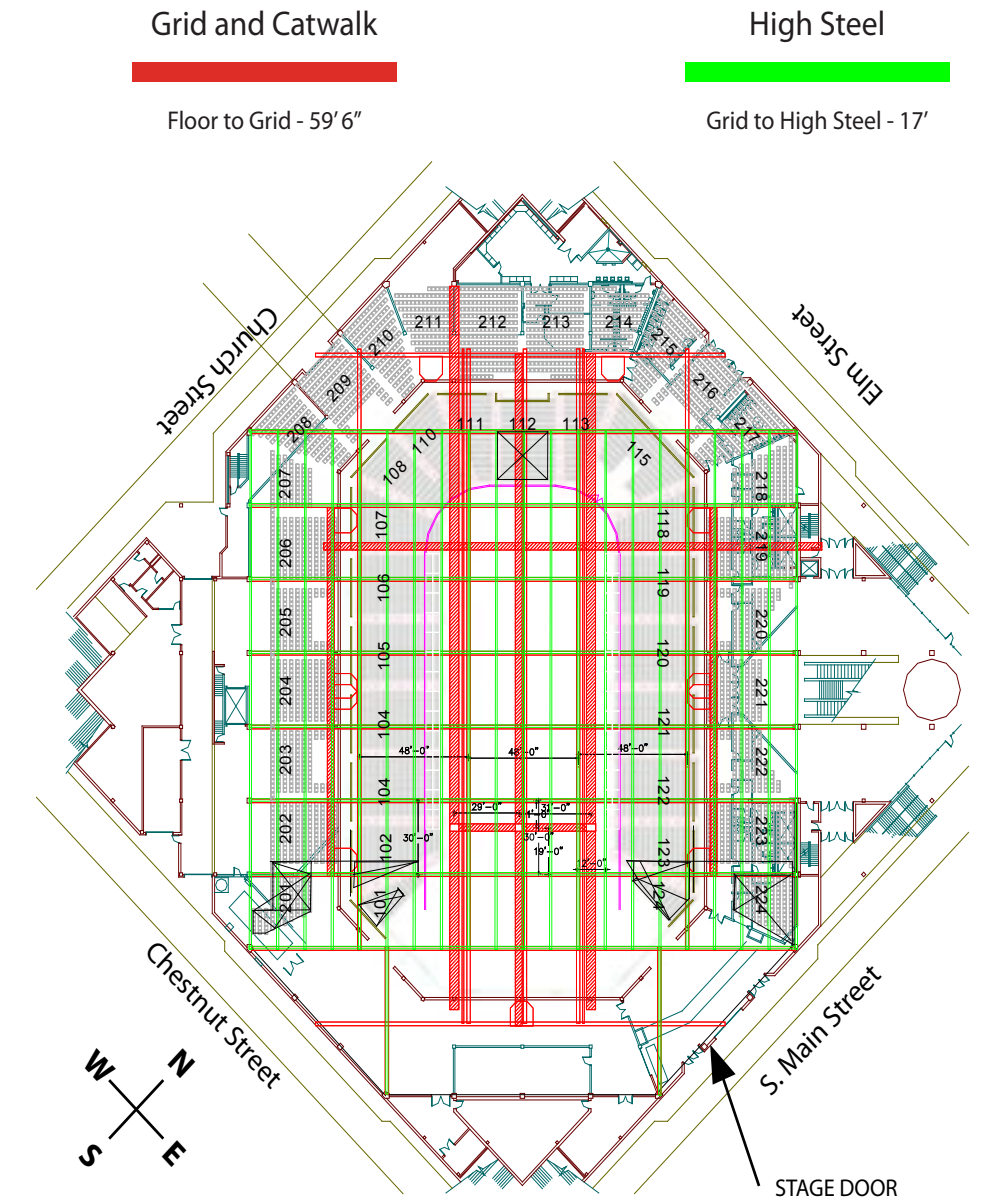
- Sound and lighting equipment rental
- 1121 North Prospect Street, Rockford, IL 61107
- 815.378.8732

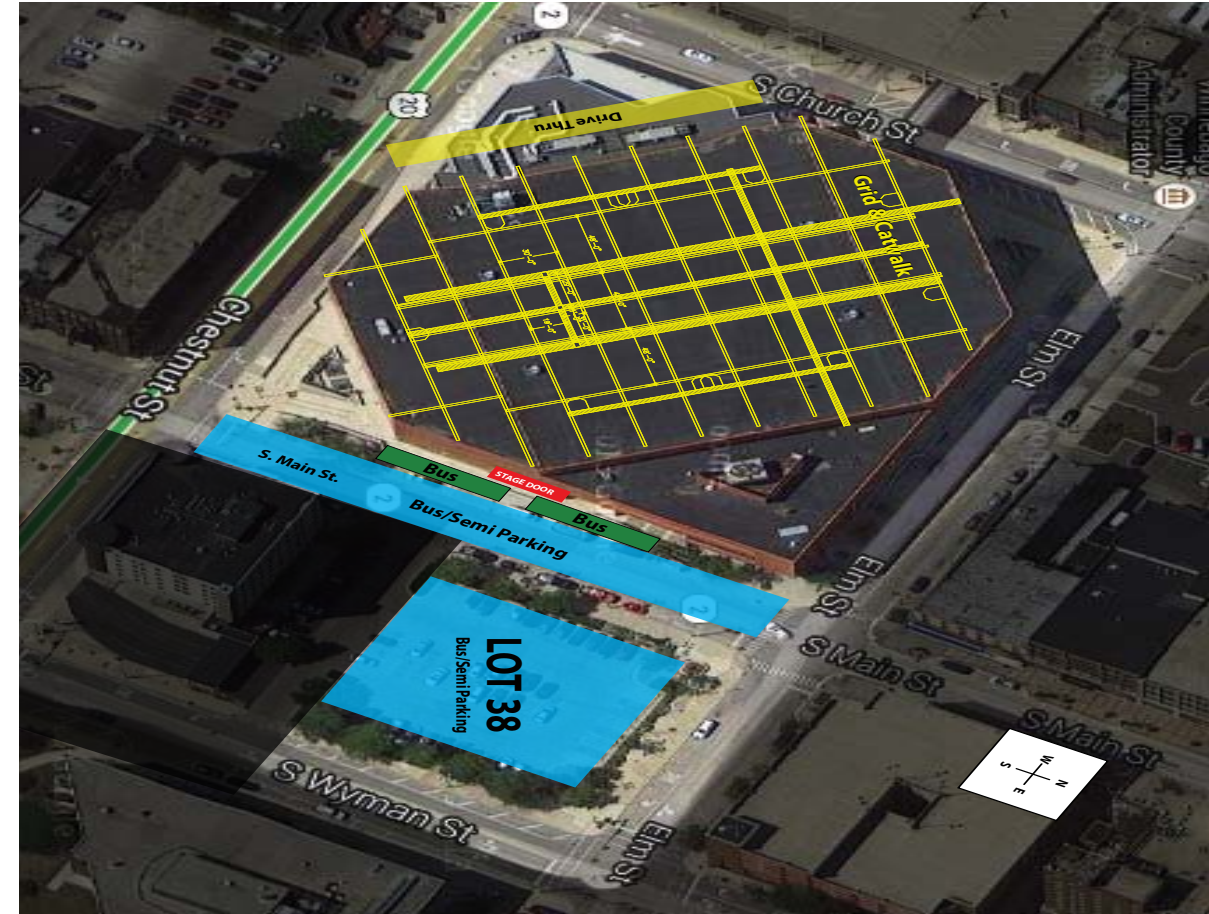
Valley Expo

- Exhibitor services, rental displays, graphics
- 4950 American Road, Rockford, IL 61109
- www.valleyexpodisplays.com
- 815.873.1500

Rigging

- Arena has a free span open grid ceiling without acoustic panels.
- Rigging can be done from the grid/catwalk beams without cherry pickers, etc.
- Catwalks that run up/downstage handle a one ton motor every foot.
- Catwalks that run left/right handle a one ton motor every foot.
- Roof support beams run stage left/right.
- Floors to grid is 58'3" and grid to high steel is 17' & requires a boom lift
- The distance between beams up and down is 30'
- Weight limit is 100,000 pounds with proper bridling.
- 10,000 lbs/ft on catwalk & main structured steel
- Videoboard/jumbotron is 20' x 20' and can be raised, removed upon request
- High trim to floor is 44', centered between 104/105 & 120/121
- 15 portable line sets
- House has 14 battens at 52' long for curtains & small light system
- Battens & portable line sets available at one ton per batton





From the North:

- Take I-90 East to the Business Route 20 (E. State St.) exit.
- Exit to the right, merge onto E. State and continue about 7 miles through town.
- Once across the river, turn left at the second light, Church Street.
- The BMO Harris Bank Center is one block away, parking is on the right.

From the South:

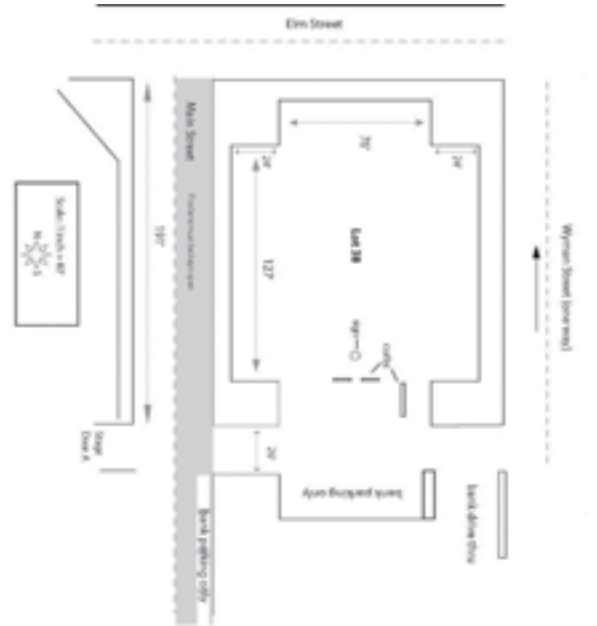
- Take I-39 to US Route 20 (Freeport-5 Rockford Exits).
- Follow US Route 20 until the third exit, IL 2 (Main Street).
- Exit and follow Main Street north until you reach Cedar Street.
- Turn left on Cedar Street and continue 2 blocks to Court Street.
- The parking ramp will be one block on the right and the BMO Harris Bank Center is just east of the parking ramp.

From the East:

- Take I-90 East to the Business Route 20 (E. State St.) exit.
- Exit to the right, merge onto E. State. Street, and continue about 7 miles through town.
- Once across the river, turn left at the second light, Church Street.
- The BMO Harris Bank Center is one block away, parking is on the right.

From the West:

- Follow US Route 20 (Note: Route 20 splits into W. State St. and Route 20; stay on Route 20).
- Exit from US Route 20 to IL 2 (Main Street).
- Follow Main Street north until you reach Cedar Street and turn left.
- Continue for 2 blocks and turn right on Court St.
- Parking is on the right and the BMO Harris Bank Center is across the street, east of the parking ramp.



Security & Safety

Permits

- Pyrotechnics needs to be discussed as a permit may be required by the city

EMS, EMT

- House staffs 2 EMS and 1 EMT-B and 1 EMT-P for front of house
- If an ambulance is requested, house can provide for an additional cost

Security

- Patrons are subject to wandling & bag search upon entry
- Staffing numbers vary depending on set up, type of event, & show requests
- Venue has its own police department which provides uniformed officers for all events

Pets

- No pets allowed except ADA with proper documentation

First Aid

- EMS handles first aid
- House has 2 AED and minor first aid kits
- House has eye wash stations

Camera Policy

- House policy is no professional cameras, maximum lenses length is 55mm
- Other policies can be considered per event
- No selfie sticks or tablets

ADA Accommodations

- Four pedestrian elevators throughout the arena
- Reasonable accommodations made for seating/ticketing and can be requested via box office
- Five in house wheelchairs available to patrons

Emergency Procedures

- The BMO Harris Bank Center has a Standard Operating Manual used to deal with emergencies including weather, evacuations, etc. available for review upon request

Local Vendors

Post Office

- USPS
- 401 S. Main Street, Rockford, IL 61101
- 815.962.5940

Pharmacy

- Walgreen's Pharmacy
- 1201 E. State Street, Rockford, IL 61104
- 815.962.2812

Wal-Mart

- Wal-Mart Superstore
- 3902 W. Riverside Blvd., Rockford, IL 61101
- 815.962.4763

Airport

- Chicago/Rockford International Airport
- 2 Airport Circle, Rockford, IL 61109
- www.flyrfd.com
- 815.969.4000

Office Services

- FedEx Office
- 6234 Mulford Village Drive, Rockford, IL 61107
- 815.229.0033

Shopping

- Cherry Vale Mall
- 7200 Harrison Avenue, Rockford, IL 61112
- www.shopcherryvalemall.com
- 815.332.2440

Newspaper

- Rockford Register Star
- 99 E. State Street, Rockford, IL 61104
- www.rrstar.com
- 815.987.1200

Hospital

- Swedish American Hospital
- Level 2 trauma hospital located 1.3 mi from the venue
- www.swedishamerican.org
- 815-968-4400

Grocery

- Schnuck's
- 2642 Charles Street, Rockford, IL 61104
- www.schnucks.com
- 815.484.2453